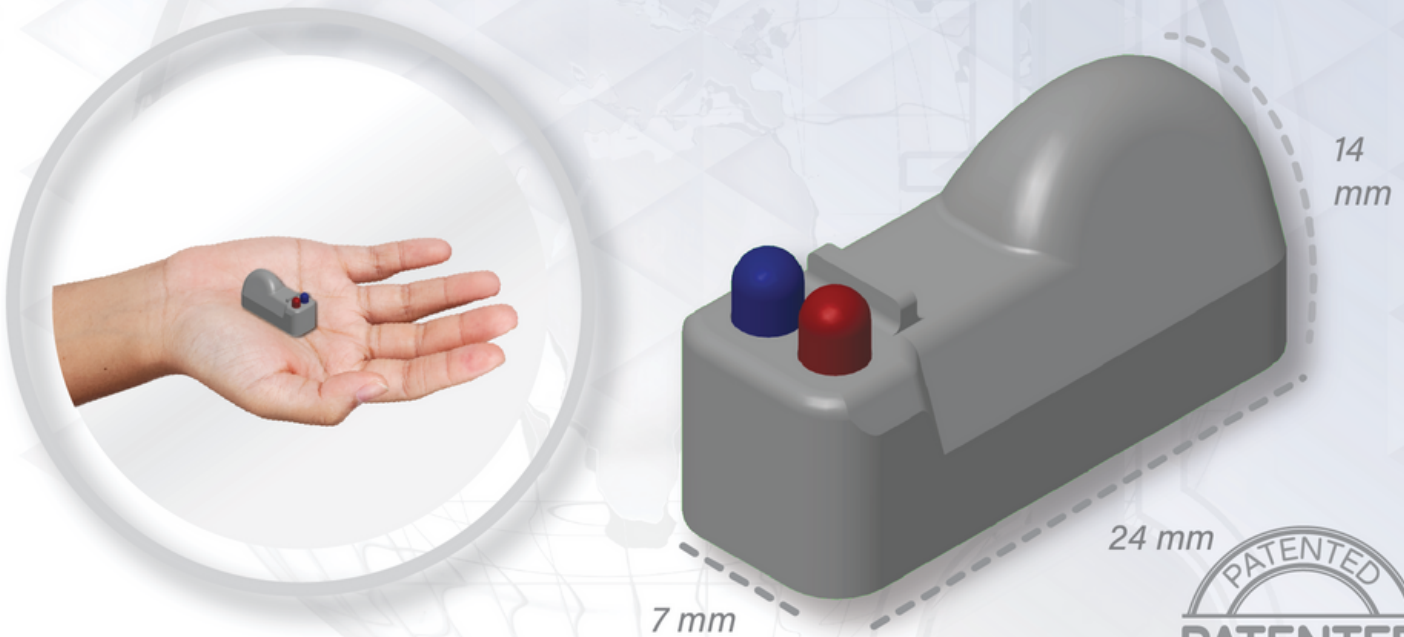


Thermal Watch

Failsafe Wireless Temperature Monitoring



Models Available :

TWS70 / TWS90 / TWS100

Threshold Available :

70 °C / 90 °C / 100 °C

Why Wireless Temperature Monitoring?



10 years Lifespan

Industrial battery and infrared communication ensure low power consumption and long lifespan



Secure & Fail Safe

Independent temperature monitor and operating till 125 °C



Simple Operation for User

With 24/7 temperature monitoring

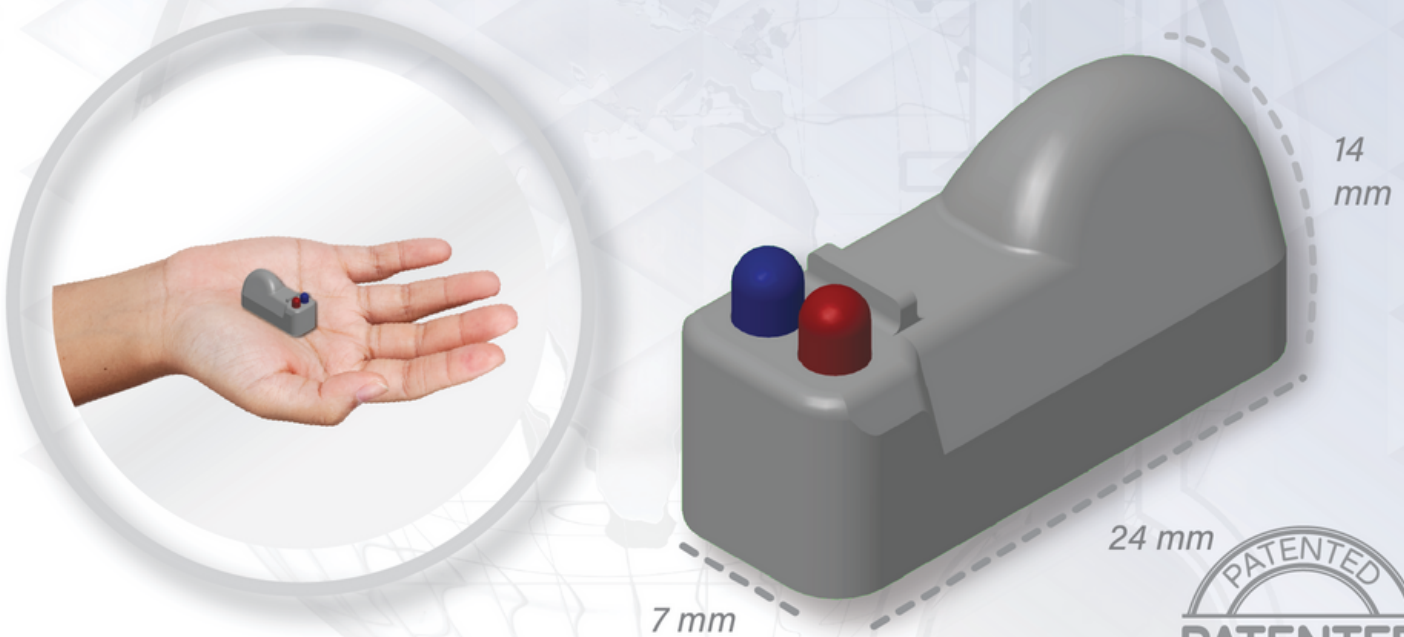


Easy Installation & Maintenance

Operative indoor and outdoor

Thermal Watch

Failsafe Wireless Temperature Monitoring



Models Available :

TWS70 / TWS90 / TWS100

Threshold Available :

70 °C / 90 °C / 100 °C

Why Wireless Temperature Monitoring?



10 years Lifespan

Industrial battery and infrared communication ensure low power consumption and long lifespan



Secure & Fail Safe

Independent temperature monitor and operating till 125 °C



Simple Operation for User

With 24/7 temperature monitoring

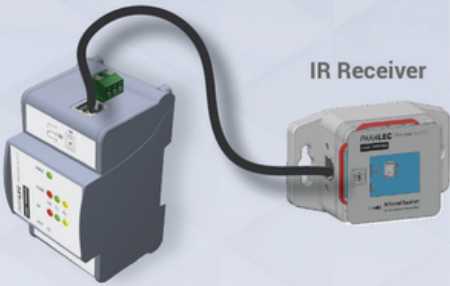


Easy Installation & Maintenance

Operative indoor and outdoor

Overview System

DIN Frame 1 modules receiving devices - TWR1

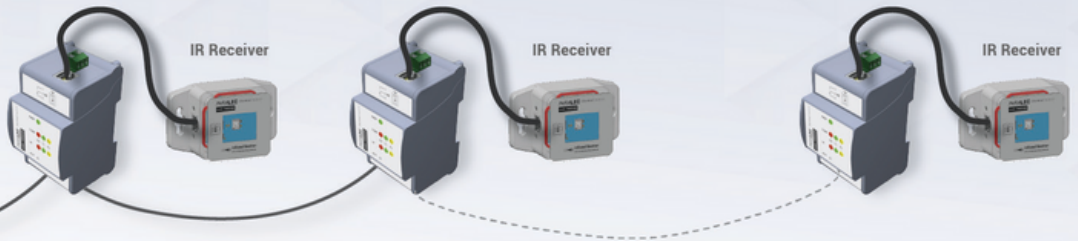


THERMAL WATCH SENSOR - TWR



..... up to 6m

Communication with upper level

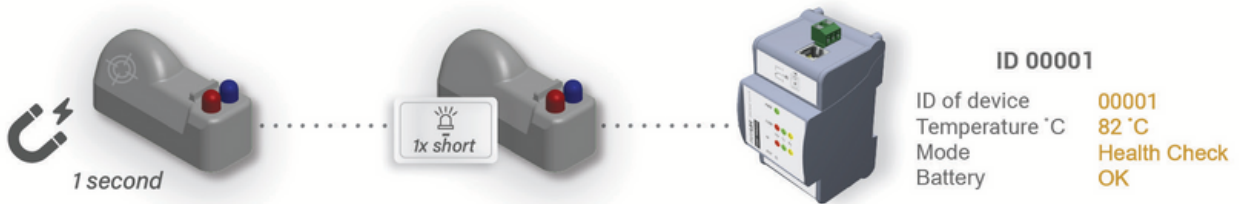


Data Concentrator with / without HMI

CAT6 cable : RS485 + 12VDC

LAN or WIFI connection
IEC61850 / DNP3 /
MODBUS or REST API

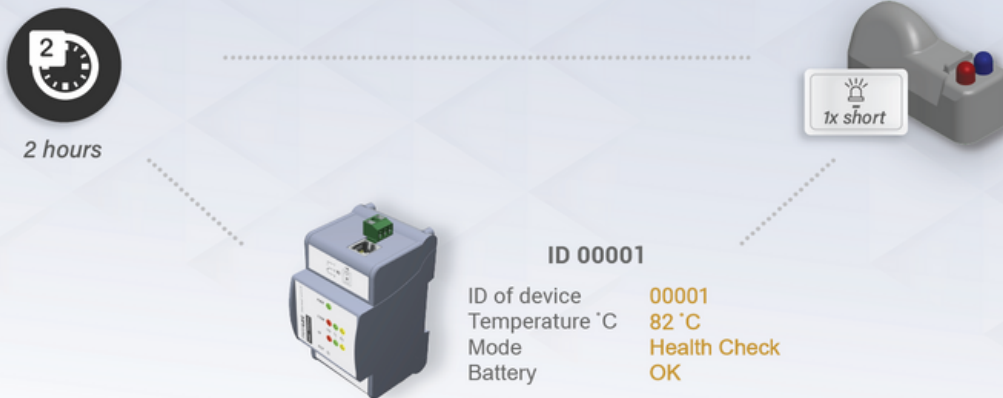
TESTING Sensor



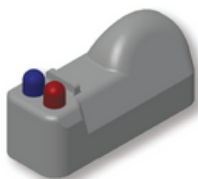
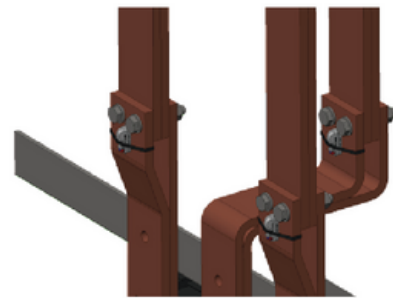
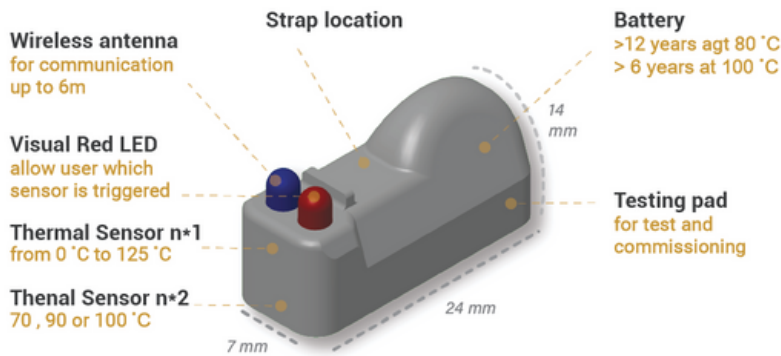
ALARM Mode



TEMPERATURE Reporting

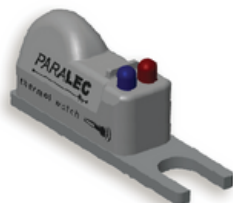


TWS - Thermal Watch Sensor



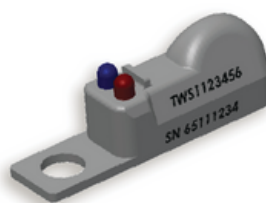
Strap or cables ties

For limited access locations
For low diameter conductors



Metal mounting plate

with fork hole for M6 bolt
Aluminum plate for ideal heat transfer
Ideal for busbar



Molded mounting hole

In built M6 hole



THERMAL WATCH RECEIVER

Dry contact output

For LED or control other devices

Connection for IR receiver

RJ12, up to 3m

ON & Communication

Green/Yellow LED indicator



TWR1-DIN = DIN Receiver

ALARM

Red LED indicator

Reset button

Communication & Power

RJ45 IN and OUT



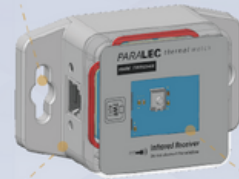
Mounting holes for easy installation

Hole slots

Connection for IR DIN

RJ12, up to 3m

Cleanable receiver



TWR1-IR = IR Receiver



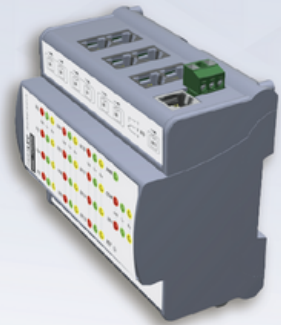
DIN receiver
1 IR-port



DIN receiver
5 IR-ports



DIN receiver
13 IR-ports



HOW TO ORDER

109-TWS Thermal Watch Sensor

Digit 4		Digit 5		Digit 6		Digit 7		Digit 8		Digit 9,10	
Version		Temperature Threshold		Commissioning Delay		Health Check Period		Mounting		Spare	
1	Version 1	1	100 °C	1	15 mins	1	2 hours	1	Strap or cables ties	11	Default
		2	90 °C	2	30 mins	2	1 hour	2	Metal mounting plate		
		3	70 °C	3	5 mins	3	30 mins	3	Molded mounting hole		
						4	1 min				


110-TWS Thermal Watch Receiver

Digit 5		Digit 6		Digit 7		Digit 8		Digit 9,10	
temperature		Number of corded sensors		Cable length		Modbus connector		Spare	
1	DIN- Receiver	1	1 x IR receiver	1	None	1	RJ45	11	Default
2	IR-Receiver	2	5 x IR receivers	2	1m	2	DB9		
3	RJ12 cables	3	13 x IR receivers	3	2m	3	Terminal		
4	LAN CAT6 RJ45 cables			4	3m				
5	Adapters								



BRIDEX  Fuji SMBE

Singapore
15 Senoko Way, Singapore 758036
TEL: +65 6756 0833

 www.bridex.fujielectric.com

 info@bridex.fujielectric.com